

Dexxo

Quick Commissioning Guide



CONTENTS

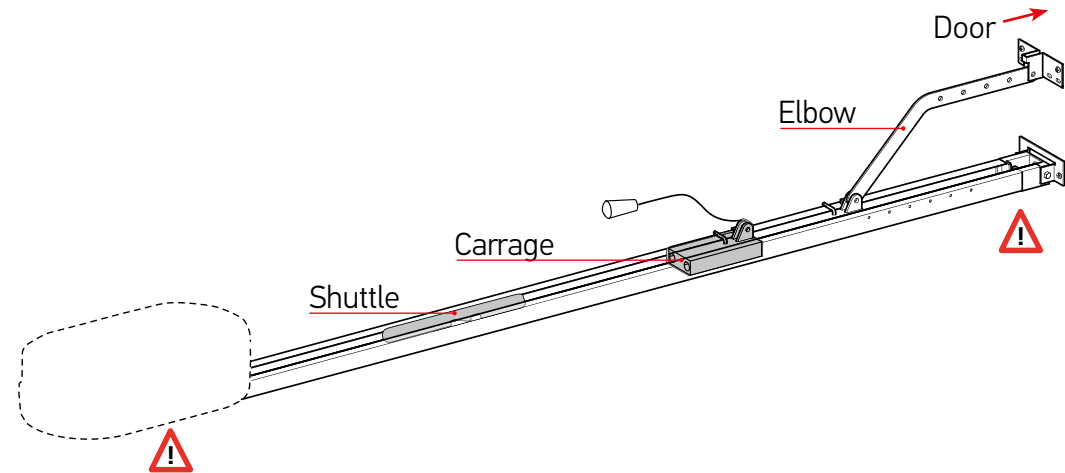
Dexxo installation	Page 3
Dexxo Pre-power up adjustments and checks	Page 4
Dexxo Pro RTS	Page 5
Dexxo Optimo RTS	Page 6
Dexxo Compact	Page 7

- Please be advised this is a quick 'commissioning' guide, for installation. Please refer to the install guide and install diagrams supplied with every motor.
- For perimeter adjustment adding products, locking out the panel, battery install please refer to installation guides.
- Can my door be motorised? As a guide rule a door needs to close manually one hand prior to motorisation. Apoposing forces need alternative solutions.
- It is advised the user manual be left with the consumer/end user.


Needs to open manually before moterising.

Pre installation and commissioning checks

Pre head fixing - ensure that the shuttle (built into the chain belt) is positioned so the carrage (built into the manual release) can connect to the elbow/arm freely.



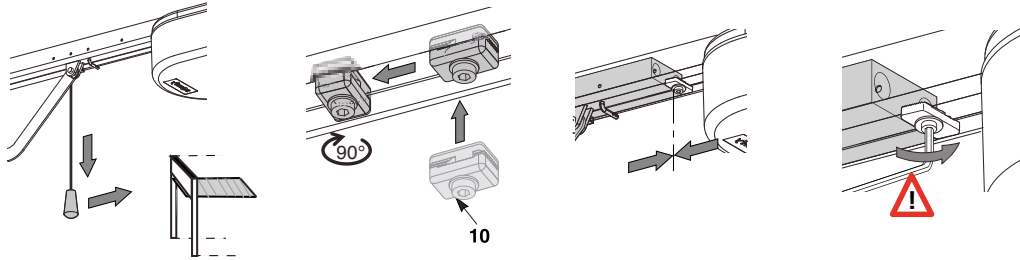
This is to ensure the shuttle is positioned to engage/disengage with the carrage.

 Failure to do so may force the shuttle in to the carrousel at each end of the raic causing damage.

Caution-buttons could be sequential.

Dexxo Pre-power up adjustments and checks

1 Positioning 1 and securing the open limit stop



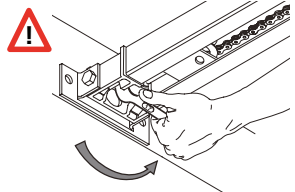
Release the trolley from the runner using the manual release pulley and move the door to the open position.

Slot the adjustable limit travel stop into the rail and turn it 90°.

Slide the limit travel stop on the rail until it meets with the carriage.

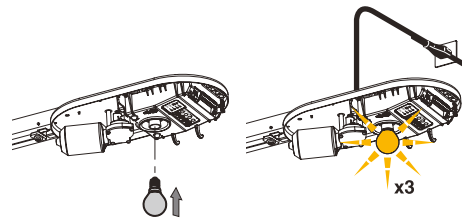
Tighten (but not over-tighten) the securing bolt to fix the limit stop in place.

2 Chain and belt rail tension



ATTENTION! - Dexxo chain and belt rails are supplied pre-tensioned. Please check the tension and only adjust if necessary.

3 Power up

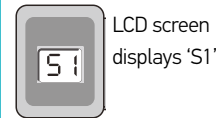


Secure the light bulb into position.

Connect the 230Vac mains supply and refit the cover.

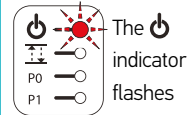
On power up

Dexxo Pro



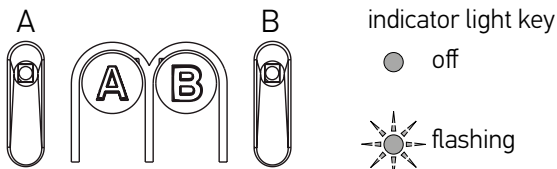
LCD screen displays 'S1'

Dexxo Optimo



The indicator flashes

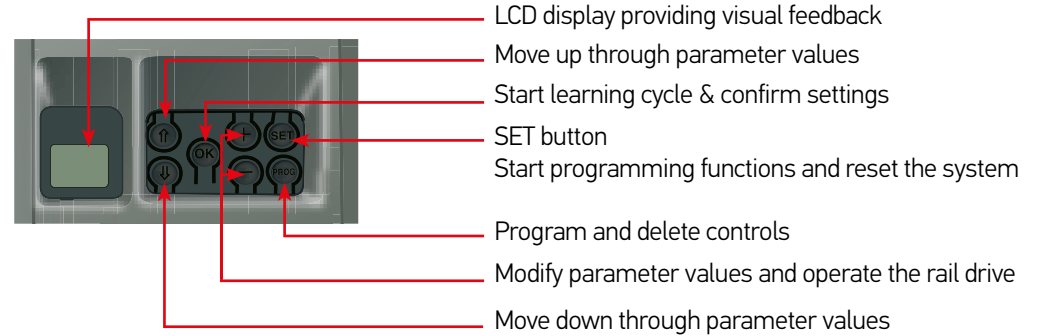
4 Programming, description of the programming buttons



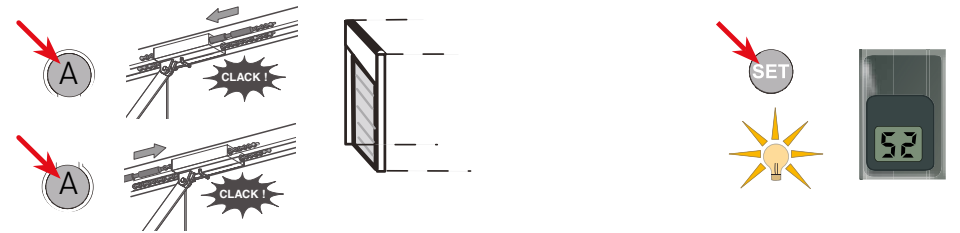
Mains on B flashes twice continually.

Dexxo Pro RTS 800 & 1000

1 Dexxo Pro RTS control panel

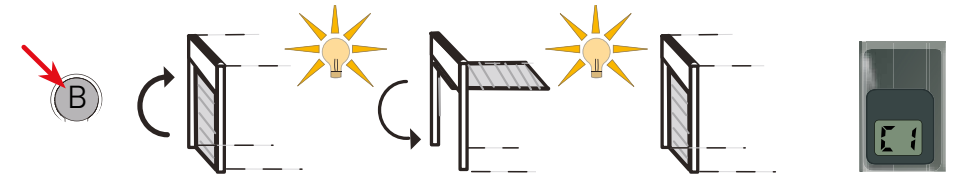


2 System preparation and self learn cycle



Engage the carriage by pressing either the '-' or '+' buttons until the chain/belt shuttle links with the carriage. Operate the door until it reaches the closed position. **ATTENTION!** - do not apply excess force during this procedure.

Press the 'SET' button until the Dexxo light comes on. 'S2' is displayed.



With the door in the closed position, press the 'OK' button to start the self-learn cycle. The door runs through a complete open/close cycle and the LCD screen displays 'C1'.

3 Programming remote controls



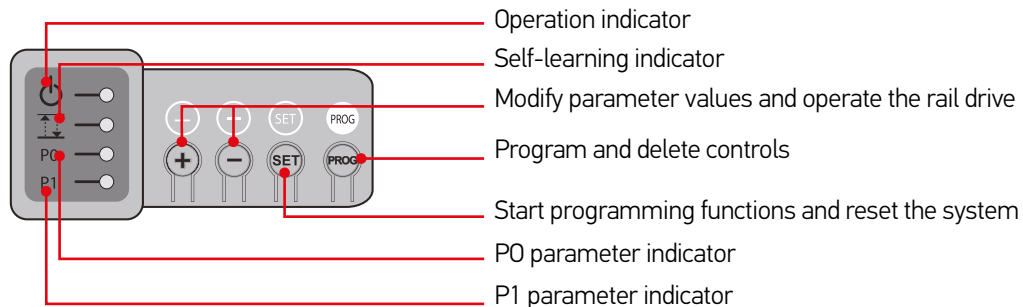
Press and hold the 'PROG' button until the Dexxo light comes on.

Press the desired button on the remote control.

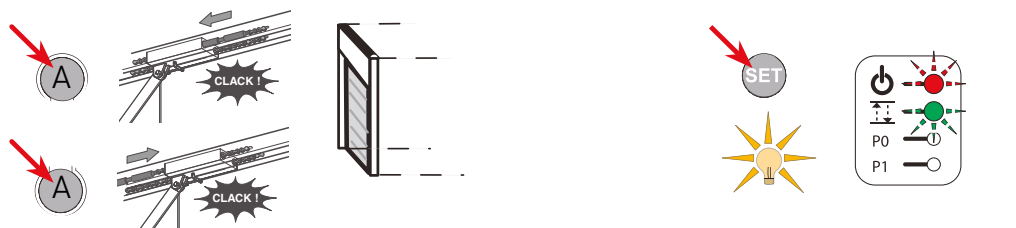
The light flashes for 5 seconds confirming the control is recorded.

Dexxo Optimo RTS 800

1 Dexxo Pro RTS control panel

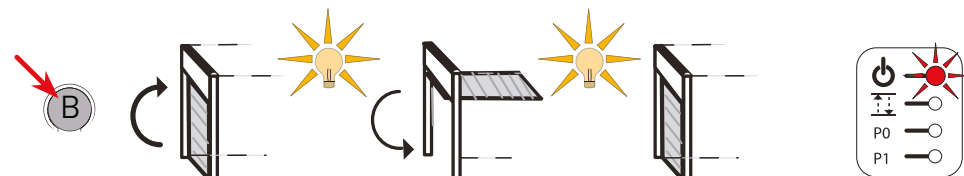


2 System preparation and self learn cycle



Engage the carriage by pressing either the '-' or '+' buttons until the chain/belt shuttle links with the carriage. Operate the door until it reaches the closed position. **ATTENTION!** - do not apply excess force during this procedure.

Press the 'SET' button until the Dexxo light comes on. The indicator flashes.



With the door in the closed position, press the 'SET' button to start the self-learn cycle. The door runs through a complete open/close cycle - the indicator goes out and the indicator stays on.

3 Programming remote controls



Press and hold the 'PROG' button until the Dexxo light comes on.

Press the desired button on the remote control.

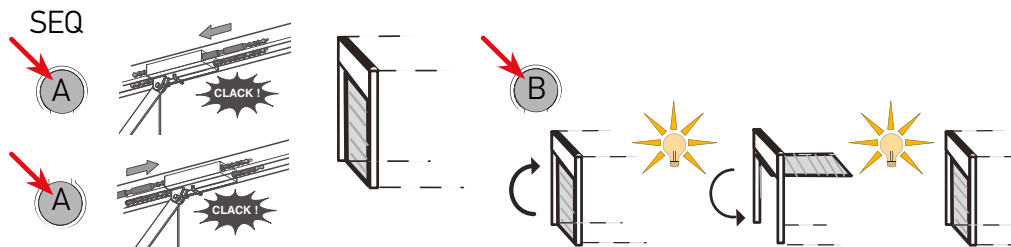
The light flashes for 5 seconds confirming the control is recorded.

Dexxo Compact 600

1 Description of the programming buttons



2 System preparation and self learn cycle



3 Auto-programming

A Control the motor with button "A" so that the transmission shuttle is engaged on the carriage and bring the door to the closed position:

- Keep pressing button "A" to cause the shuttle to move.
- Release the button to stop the movement.
- Press button "A" again to trigger movement in the opposite direction.

B Adjust the closed position using button "A".

Release button "A" before forcing the motor on the door.

C Press "B" to launch the auto-programming cycle.

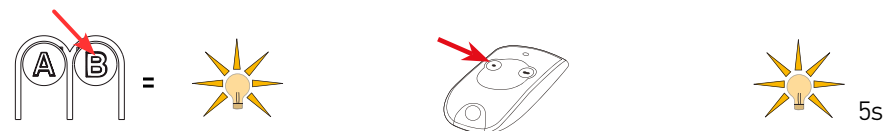
The door performs a complete Opening-Closing cycle.

- If the auto-programming is correct, warning light B goes out.
- If the auto-programming cycle was not successful, warning light B continues to flash (2 flashes).

During auto-programming:

- If the door is moving, the movement is stopped and auto-programming is interrupted if any of the buttons are pressed.
- It is possible to access auto-programming mode at any moment including when the auto-programming cycle has already been completed.

4 Programming remote controls



Press and hold the 'B' button until the Dexxo light comes on.

Press the desired button on the remote control.

The light flashes for 5 seconds confirming the control is recorded.

Somfy Ltd

Unit 7, Lancaster Way

Airport West

Yeadon Leeds

West Yorkshire

LS19 7ZA

0113 391 3030

sales.uk@somfy.com

www.somfy.co.uk

A BRAND OF **SOMFY** GROUP